

Barco portacontenedores

Tipo panamax

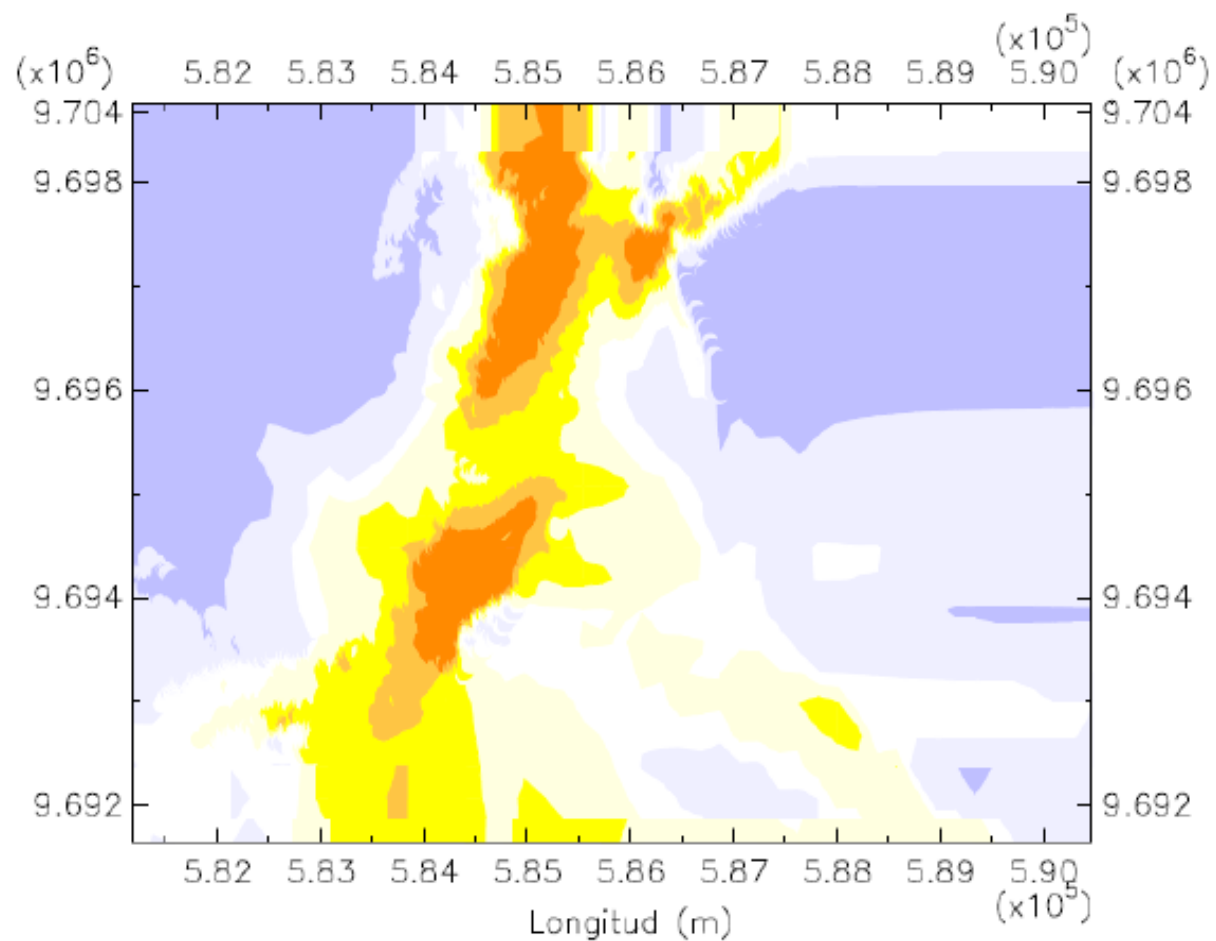
Eslora: 289 m

Manga: 32.20 m

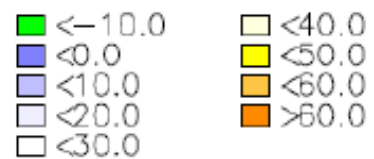
Calado: 11.60 m

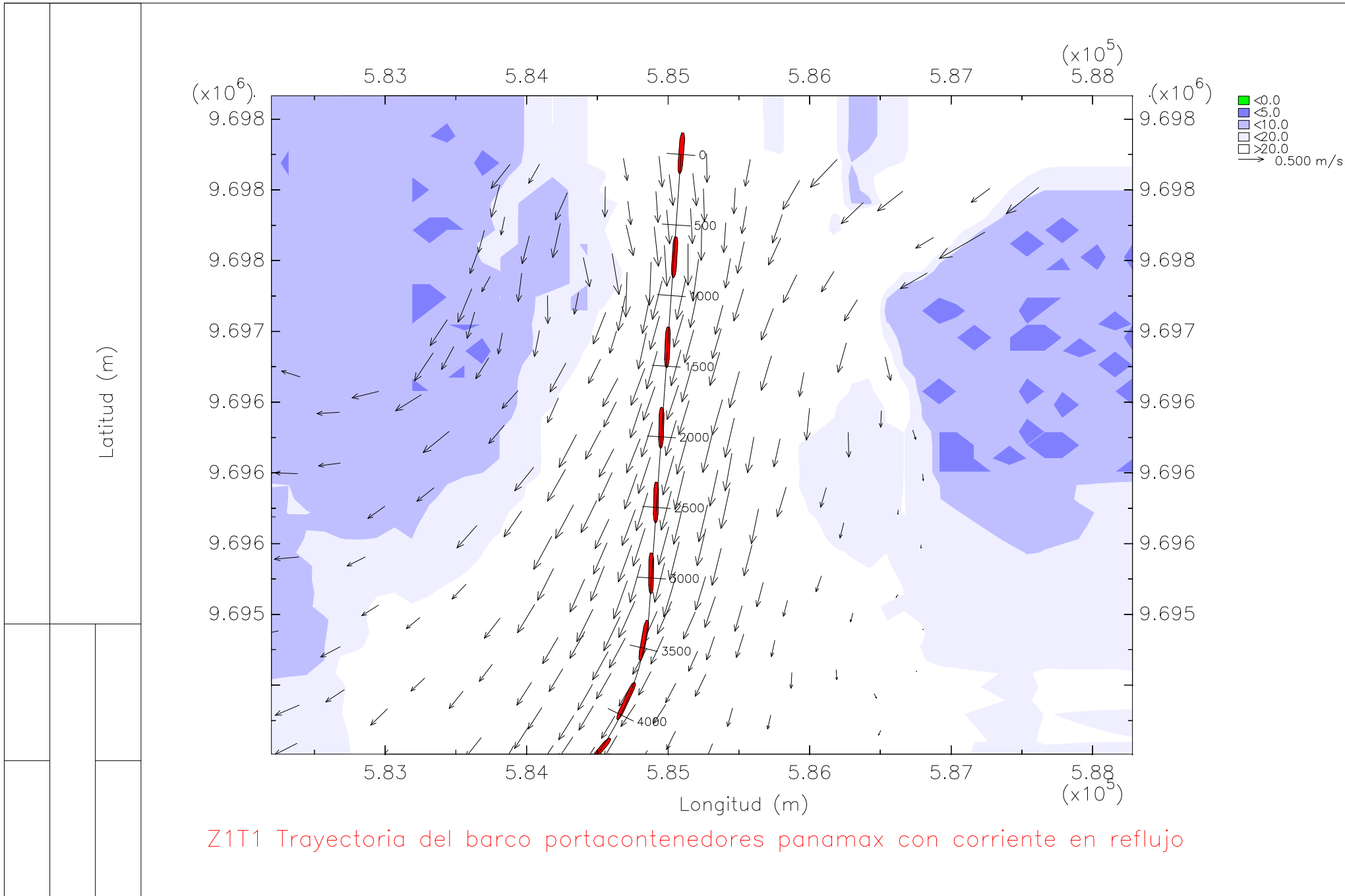
En la zona 1, tramo 1

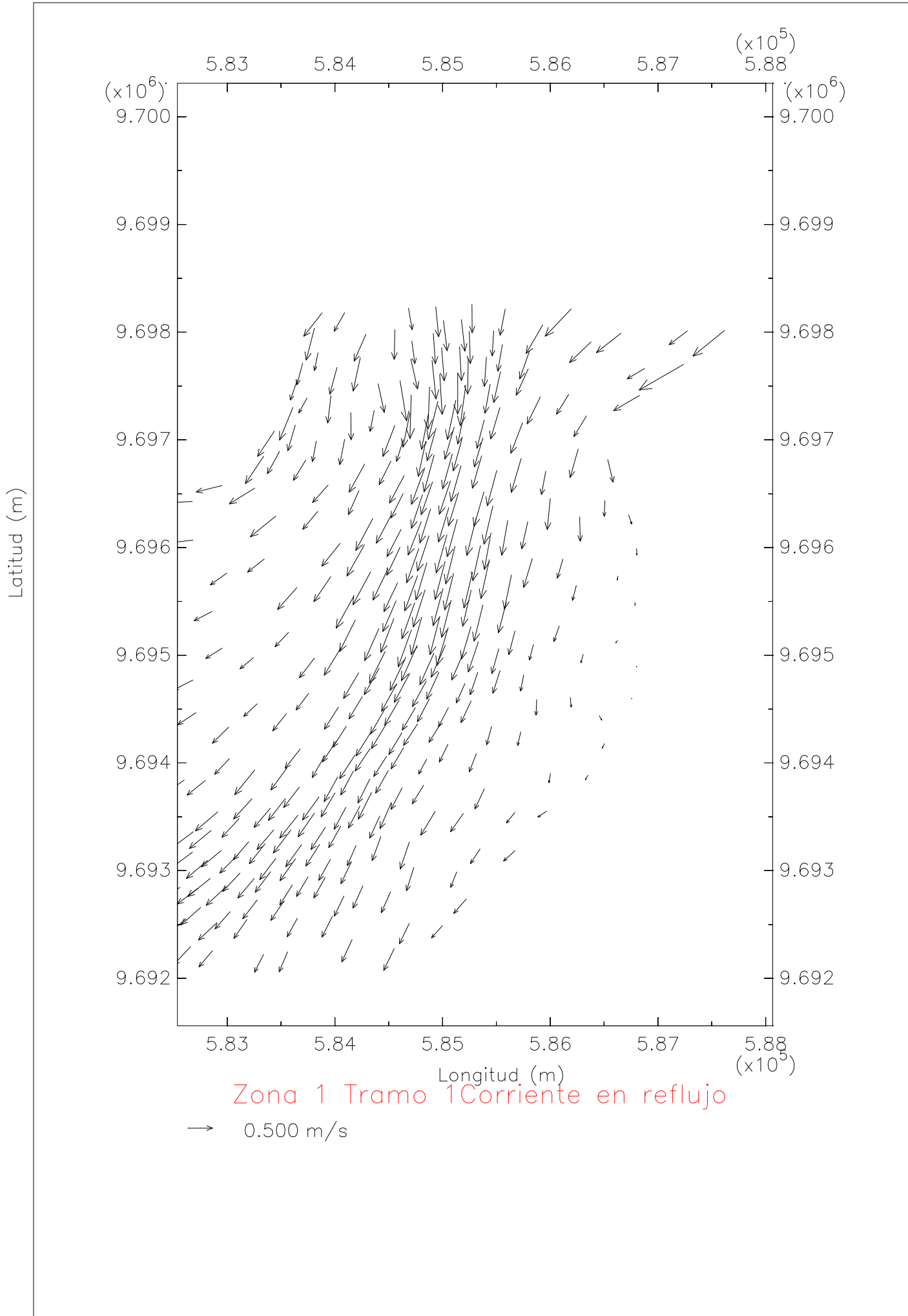
Bajo condiciones de vaciante

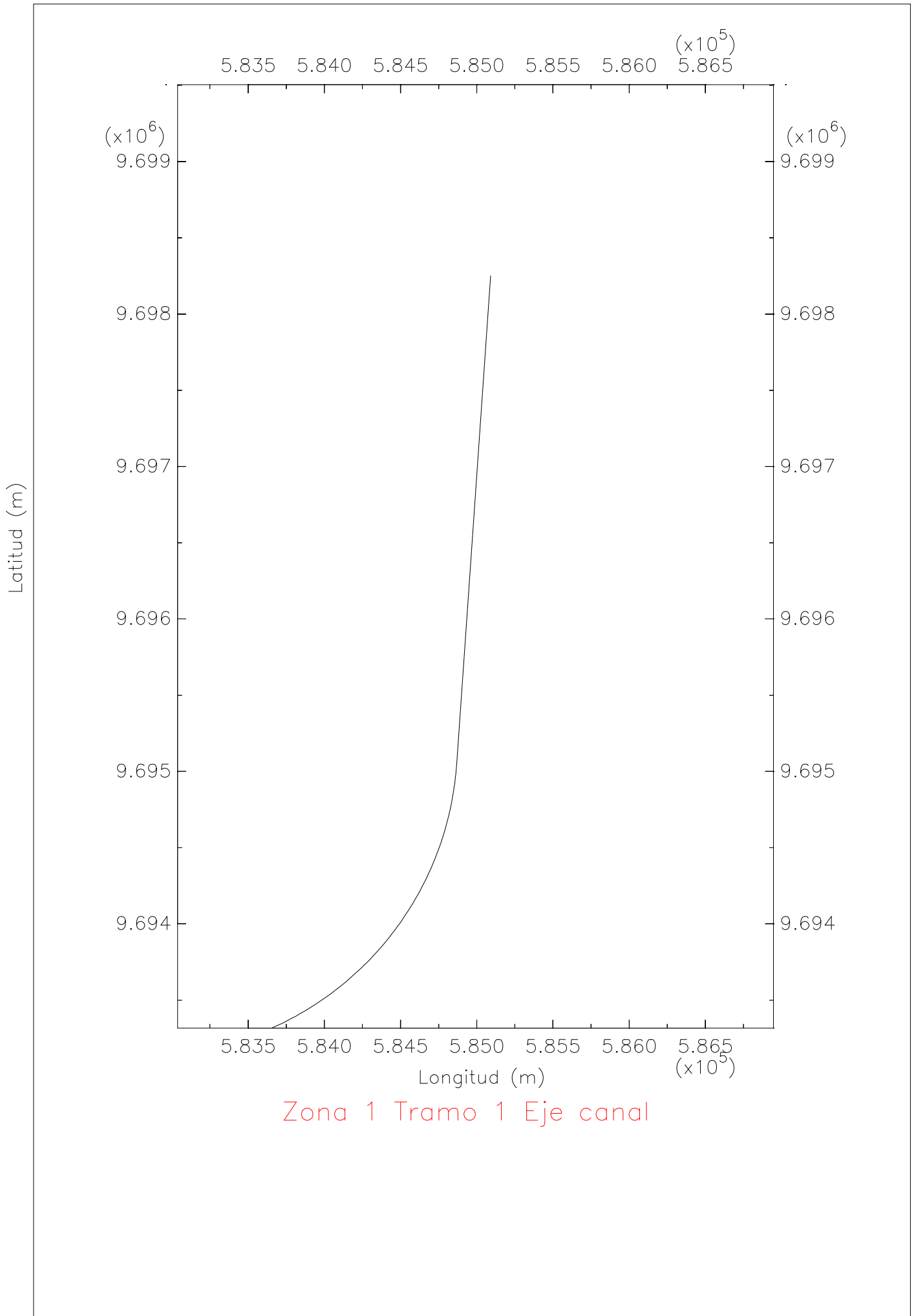


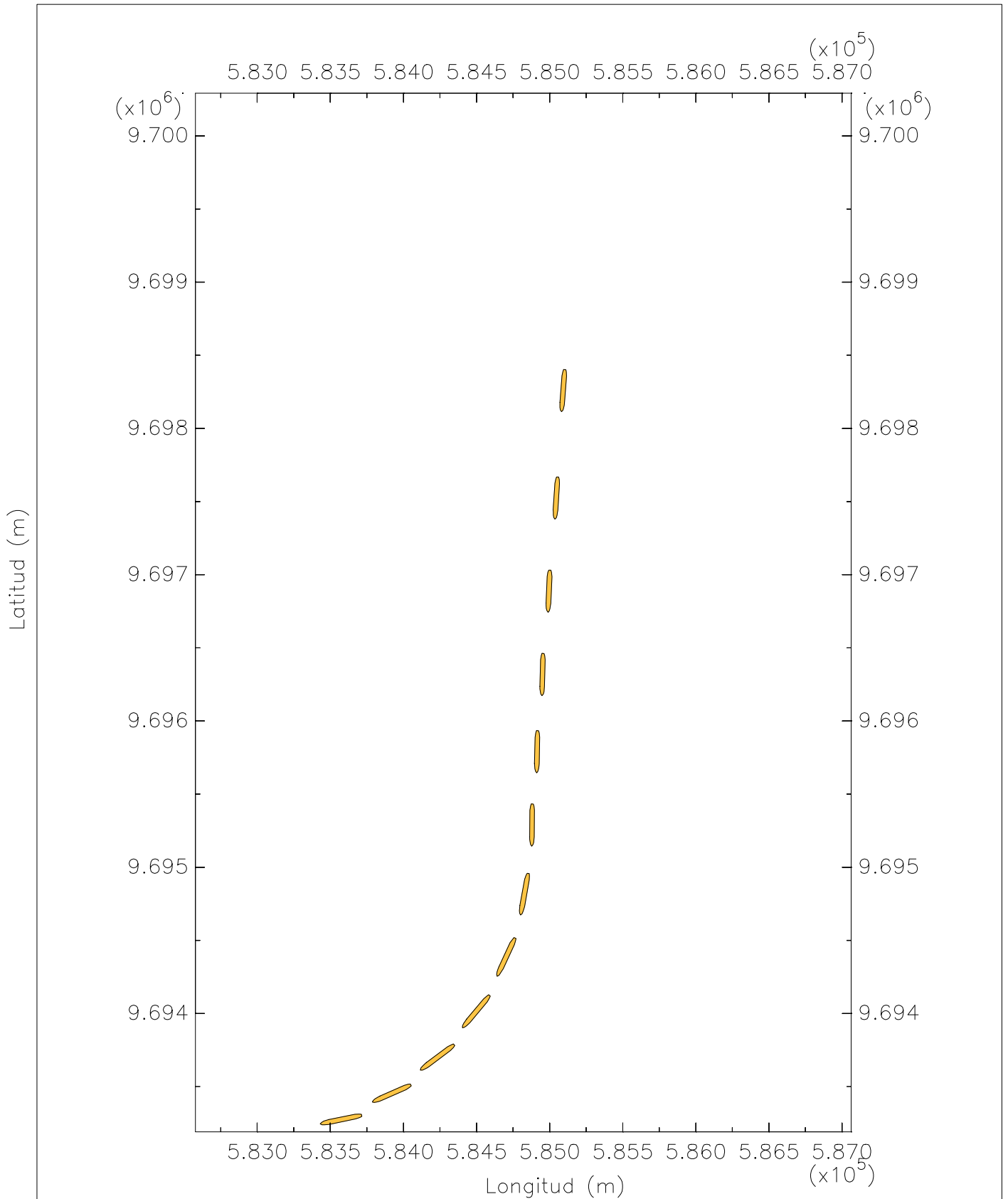
Zona 1 Tramo 1 Profundidad I











Z1T1 Trayectoria del barco portacontenedores Panamax en reflujó

